

UIDAI

Unique Identification Authority of India
Planning Commission, Govt. of India (GoI),
3rd Floor, Tower II,
Jeevan Bharati Building,
Connaught Circus,
New Delhi 110001



AADHAAR ENROLMENT CLIENT INSTALLATION – READ ME VERSION 1.1

Table of Contents

1. INTRODUCTION.....	3
1.1 INSTALLATION PRE-REQUISITES	3
1.1.1 Installable Path.....	3
2. INSTALLATION PROCEDURE.....	4
2.1 INSTALLATION PACKAGE CONTENTS.....	4
2.2 INSTALLATION STEPS.....	4
2.2.1 Installation User and Application User.....	4
2.2.2 WINDOWS INSTALLER 4.5 SETUP.....	5
2.2.3 Microsoft .NET framework 3.5 sp1 setup.....	6
2.2.4 Microsoft SQL server 2008 r2 express setup.....	7
2.2.5 Transliteration setup	7
2.2.6 Aadhaar QSS SDK Setup	7
2.2.7 Installing Vendor Device Manager.....	7
2.2.8 Aadhaar Enrolment Client Installation	7
3. TROUBLESHOOTING	9
4. KNOWN ISSUES	11
5. UN-INSTALLATION PROCEDURE	12
CONTACT DETAILS.....	13

1. Introduction

This document provides step-by-step instructions to install the AADHAAR Enrolment Client and Biometric components needed for Biometrics capturing.

The document is not intended to be a user manual for the AADHAAR Enrolment Client. The application has been built to work with the given pre-requisites.

1.1 Installation Pre-requisites

- Operating System: Windows XP SP3 OR Windows 7 (only 32-bit editions)
- Windows Installer 4.5
- Microsoft .Net Framework 3.5 SP1
- Microsoft SQL Server 2008 R2 Express
- Aadhaar QSS SDK Setup
- Vendor Device Manager

All the above mentioned Pre-requisites are mandatory. The ‘Enrolment Client’ application should be installed & executed only after the successful installation of the pre-requisites.

1.1.1 Installable Path

The mentioned paths are relative path where the Installation Zip is extracted.

Item	Reference Path after downloading the Release
Pre-requisites/ Dependencies Path	.../CompleteSetup/4.Dependencies/
Aadhaar Enrolment Client Setup Path	.../CompleteSetup/5.AadhaarEnrolmentclientInstallation/Setup_Aadhaar_Enrolment_Client_v1106.exe

2. Installation Procedure

2.1 Installation Package Contents

The installation setup (extracted from the [Installation Path](#)) contains the following folders:

- **CompleteSetup** – For the full installation ‘Aadhaar Enrolment Client’
 - **Dependencies** - this folder contains all the pre-requisites to be installed before installing Aadhaar Enrolment Client
 - **Checklist** – This folder contains checklist needs to be filled at the time of installation and send it to <mailto:techsupport@uidai.gov.in>
 - **Aadhaar Enrolment Client Installation** – This folder contains the setup file of the product.

2.2 Installation Steps

Note: Make sure that the instructions below are followed in the exact order, to ensure that the application is installed and configured correctly.

2.2.1 Installation User and Application User

Note: If Windows Installer 4.5 and Microsoft .Net Framework 3.5 SP1 is already installed on the machine, then do not install it again.

If you had previously installed the AADHAAR Biometrics Components, Enrolment Client and Vendor Device Manager application, it has to be uninstalled as mentioned in the “**Un-installation**” section.

Computer Users

Note: Your computer has default Administrator User. This user account gets created while installing the Operating System.

- Login as “Administrator” and create user accounts (non-administrative) for Operators and Supervisors to login.

Note : If the installation is on the Windows 7 or Vista, turnoff the UAC. Follow below steps:

Windows 7

- a. Open Control Panel and goto User Accounts
- b. Click on Change User Account Settings

c. On the Window, scroll the bar down to “Never Notify” and click ok to exit.

Windows vista

- a. Open Control Panel and goto User Account
- b. Turn User Account Control (UAC) on or off
- c. Uncheck “Turn User Account Control (UAC) on or off”

Installation Process

1. Login as Administrator and install the following:
 - b) Pre-requisites -[WINDOWS INSTALLER 4.5](#) , [Microsoft .NET framework 3.5 sp1](#), [Microsoft SQL server 2008 r2 express](#), (in case already installed do not install again)
 - c) [Transliteration setup](#) (This needs to be installed to every user)
 - d) [Aadhaar QSS SDK Setup](#) (in case already installed uninstall and install again)
 - e) [Vendor Device Manager](#) (in case already installed uninstall and install again)
 - f) [Aadhaar Enrolment Client Installation](#) (in case already installed uninstall and install again)
2. Login as **Operator or Supervisor User** and install the following:
 - a. Local Language IME (Particular Google IME) *(Some Operating System installations might need users to be Administrator to install Google IME.)*

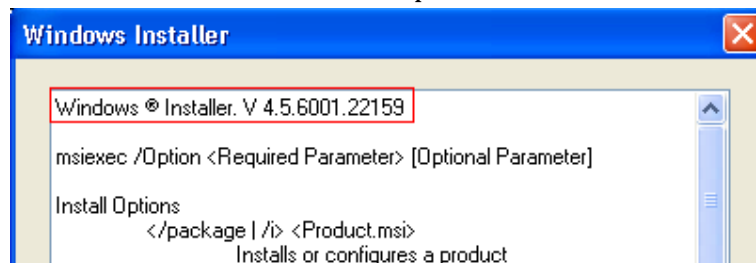
Note: Actual Operators should login into the Desktop/Laptop and Aadhaar Enrolment Client with his/her Actual Operator Id and Password to Enrol Residents.

2.2.2 WINDOWS INSTALLER 4.5 SETUP

*Note: If Windows Installer 4.5 or above is **already present**, then skip this step.*

To Check the Windows Installer version installed in the system, follow the below steps.

1. Type “msiexec” on Run Command
2. Below shown screen will open. The version is mentioned on the top.



3. Skip Windows Installer installation if the version (marked in the red box) is more than 4.5.

If Windows Installer 4.5 is not installed then follow the step by step installation process explained in “**AADHAAR_Tech_Doc_Windows Installer 4.5.docx**” available at “3.Dependencies\1.windowsinstaller4_5” folder.

Note: Windows 7 OS normally comes with Windows Installer 4.5 and above. Hence the above step can be skipped.

2.2.3 Microsoft .NET framework 3.5 sp1 setup

Note: Windows 7 Operating System has the higher version of .net framework 3.5 sp1 installed. Hence this installation step can be skipped.

For Windows 7 OS, please follow below steps to confirm if correct version of .NET Framework is available.

1. Go to Control Panel -> Programs and Features -> click on “Turn Windows features on or off”

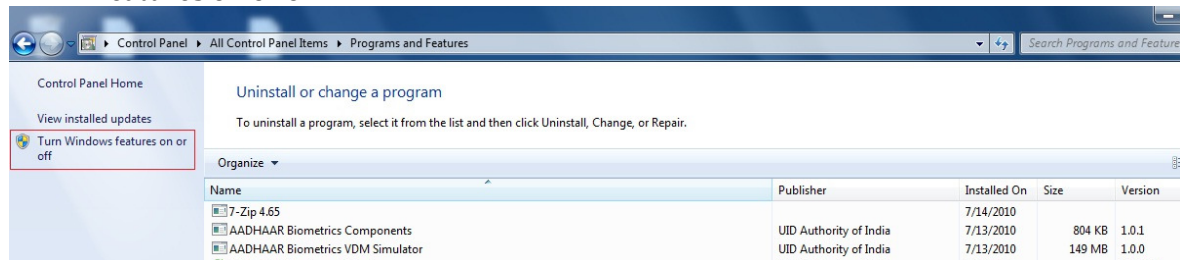


Figure 1: Control Panel

2. Below “Window Features” windows pops up

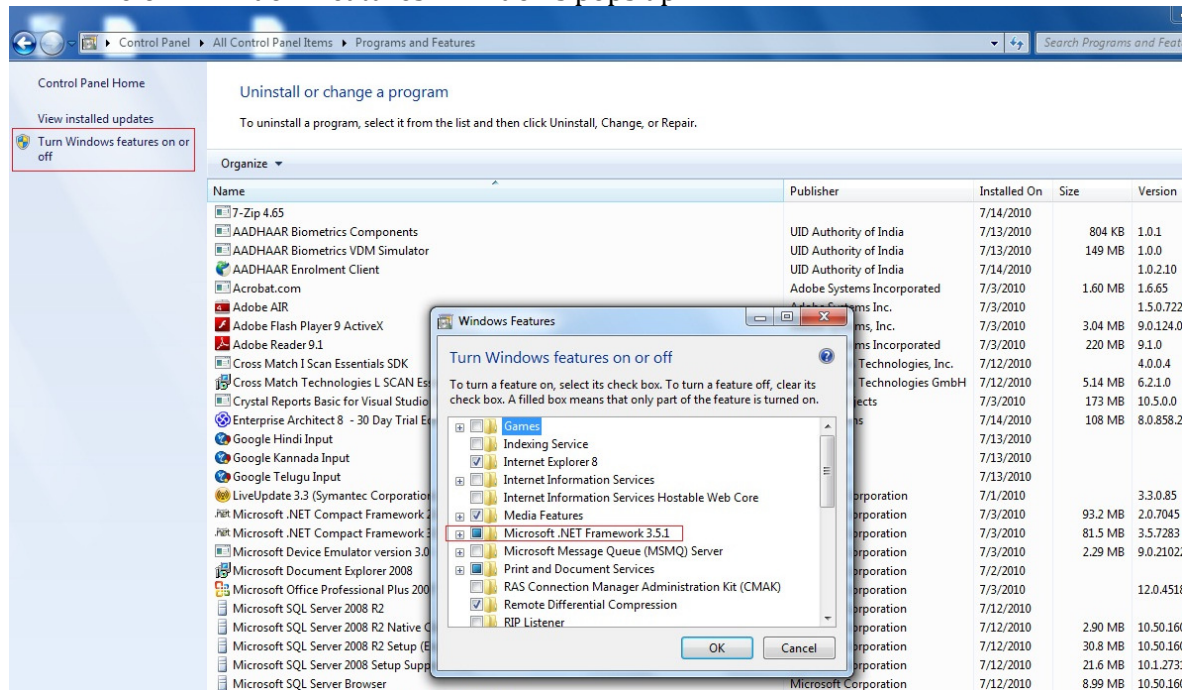


Figure 2: Programs and Features

3. Please select Microsoft .Net Framework 3.5.1 if it is not selected. If this has been already selected then Microsoft .Net Framework 3.5 SP1 is already installed on this machine. Hence the installation can be skipped.

If Microsoft .Net Framework 3.5 SP1 is not installed then follow the step by step installation process explained in “AADHAAR_Tech_Doc_InstallProcedure.Net3.5SP1.docx” available at “3.Dependencies\2.dotnetfx35sp1” folder.

2.2.4 Microsoft SQL server 2008 r2 express setup

Kindly follow the step by step installation process explained in “AADHAAR_Tech_Doc_InstallProcedureSQL2008R2.docx” available at “3.Dependencies\3.SQLR2Plain” folder.

2.2.5 Transliteration setup

The application uses Google IME for Language Transliteration. Please download Google IME for a particular language from Internet and install before installing the application. This requires internet connectivity. Currently supported languages:

- For Hindi – Install “googlehindiinputsetup.exe” from Internet
- For Kannada – Install “googlekannadainputsetup.exe” from Internet
- For Telugu – Install “googletelguinputsetup.exe” from Internet

In case required Google IME already exists, this SKIP this step.

2.2.6 Aadhaar QSS SDK Setup

Kindly follow the step by step installation process explained in “AADHAAR_Tech_Doc_InstallProcedureQSS_SDK.docx” available at “3.Dependencies\4.Aadhaar_QSS_SDK_Installer”.

Restart the System once the installation of Aadhaar QSS SDK Setup is completed.

2.2.7 Installing Vendor Device Manager

Contact Biometric Device vendors to get the appropriate vendor device Manager (VDM) for the Biometric Devices.

Couple of Vendor device manager setup is available within dependencies folder, under “3. Dependencies\5.Vendor Device Manager” folder.

2.2.8 Aadhaar Enrolment Client Installation

- If the Enrolment Client is already installed, go to Start->Control Panel->Add or Remove Programs and Uninstall ‘Aadhaar Enrolment Client’.
- Run the “**Setup_Aadhaar_Enrolment_Client_v1106.exe**” by double clicking it.
- Go through the installation wizard and complete the installation
- Please note that this installation might take several minutes as it installs the following in addition to the application:

- AADHAAR Biometrics Components
- Creates the database
- Imports the master data
- Places the barcode fonts
- The application installation creates a shortcut on the desktop as well as an entry in the Program Menu. So the application can be started from the **desktop shortcut** OR from “**Start -> Programs -> UID Authority of India -> AADHAAR Enrolment Clients -> AADHAAR Enrolment Client**”.

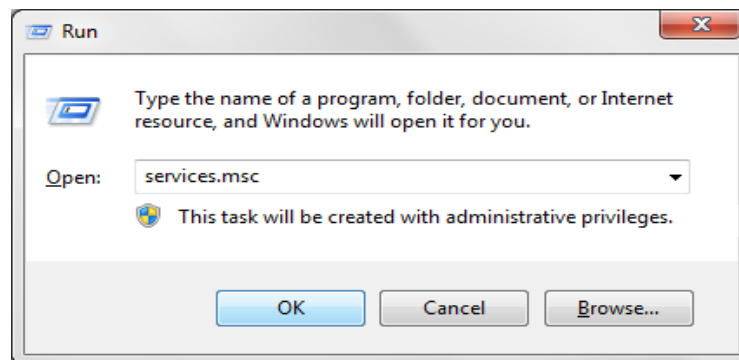
Note: There is no need to install the application for every user. One installation will make the application available to all System users. However, this is not applicable to Google IME. This needs to be installed to every user.

3. Troubleshooting

- If the login screen shows an error message saying “**Error importing the master data. Please contact system administrator**”, then ensure that User Credentials file named “UID_Credentials_Import.txt” is available under “C:\AadhaarEnrolmentClient\ folder and details of Registered Enrolment Agency Operators and Supervisors are updated.
- If none of the Windows services are starting, please verify if there is any anti-virus software that blocks other programs from opening ports.
- If the enrolment client application shows that one or all of the devices are not connected, and if the devices are actually connected to the machine, please stop and start all the services (*Contact Biometric Device vendors for the step*). Then start the application again.
- **Verifying and Managing Biometric Services**

a) Verifying Services Running

- Open Windows Services by clicking on “**Start -> Run**”, type “**services.msc**” and click on OK. See screenshot below:



- In the window that appears, verify that the following services are seen.

Name	Description	Status	Startup Type	Log On As
AADHAAR Biometrics Device Manager	Mediates b...	Started	Automatic	Local System
AADHAAR Camera Vendor Device Manager	Provides bi...	Started	Automatic	Local System

b) Starting Services

Right click on the service and Click on Start for desired action. Start the services in following **order**:

- Start AADHAAR Biometric Device Manager service
- Start AADHAAR Camera Vendor Device Manager

- Start Vendor specific VDM services (these can be 1 or more)

c) Stop Services

Right click on the service and Click on Stop for desired action. Stop the services in following order:

- Stop Vendor specific VDM services (these can be 1 or more)
- Stop AADHAAR Camera Vendor Device Manager
- Stop AADHAAR Biometric Device Manager service

4. Known Issues

- The Aadhaar Enrolment Client application is built to work on 32-bit operating systems. It does not support 64-bit Operating System.
- If the machine already had SQL Express 2005 or SQL Express 2008 installed, and if that was configured for only Windows Authentication, then the enrolment client application will not work. In such a case, please contact the technical team for a workaround.

5. Un-installation Procedure

- Login to the machine with an account having administrator access.
- Stop all the services.
- To un-install the application, go to “**Control Panel -> Add/Remove Programs**” and remove the installed components in the following order:
 - AADHAAR Enrolment Client (*Note : Aadhaar Enrolment Client can also be removed by clicking on “Start – All Programs – UID Authority of India - Aadhaar Enrolment Client - Uninstall Aadhaar Enrolment Client”*)
 - Vendor Device Manager (*Get Exact program names from Vendor Device Manager installation/ Un-installation documents*)
 - L SCAN Essentials 6.2.1.0 Runtime (if Installed)
 - I SCAN Essentials 16.0.0.400 Runtime (if Installed)
 - AADHAAR Biometrics Components if it is present from any of the installations prior to 1.0.7.0.
 - Aadhaar QSS SDK Setup

PLEASE FOLLOW THE ABOVE ORDER DURING UNINSTALLATION

Please note that un-installation of the above components will not uninstall any of the pre-requisites that would have been installed, viz. MICROSOFT SQL SERVER 2008 R2 EXPRESS, .NET Framework 3.5 SP1, Windows Installer 4.5, Windows Installer 3.1.

Contact Details

For any queries, please contact,

Email To	techsupport@uidai.gov.in
Website	http://www.uidai.gov.in
Toll Free Number	1800 180 1947
Write At	P.O. Box # 1947, Bangalore – 560001